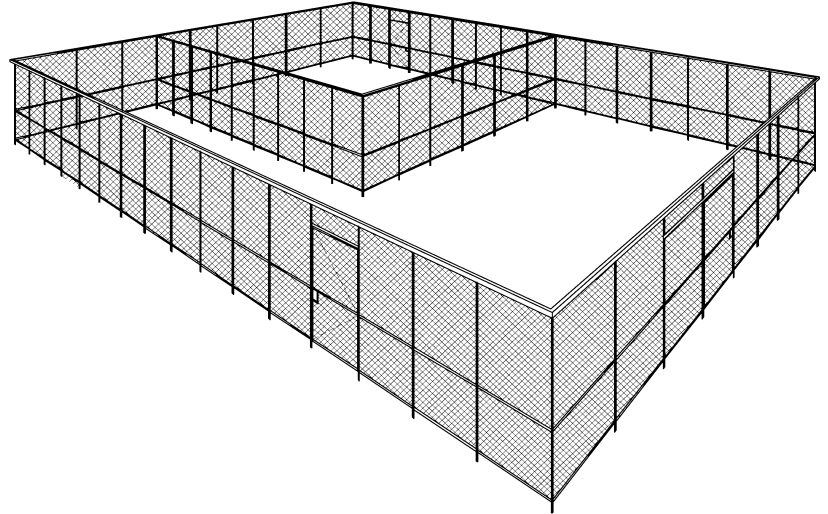




Cal Wire

Woven Wire Division

"Woven Wire Specialists Since 1948"



CAL WIRE Type 101 Construction Woven Wire Industrial Partitions

BENEFITS OF CAL WIRE WOVEN WIRE MESH:

Security

Heavy duty 10 gauge woven wire construction protects your valuable assets and inventory. Keyed mortise type locks are standard on all 101 gates.

Flexibility

Modular panel construction allows for quick and simple installation. Future layout changes are easy with Cal Wire's modular design.

Toughness

All wires are securely clinched or welded to heavy duty 12 gauge roll formed channel frames. Woven design allows for maximum impact resistance.

Efficiency

Open wall design provides visual security, while utilizing existing lighting, sprinklers, and HVAC.



Applications For Standard 101:

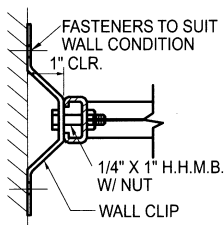
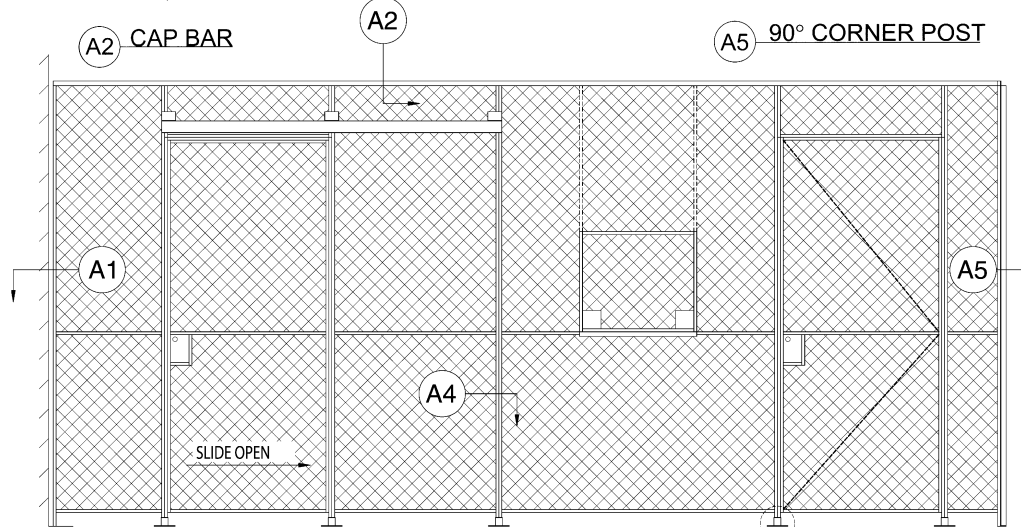
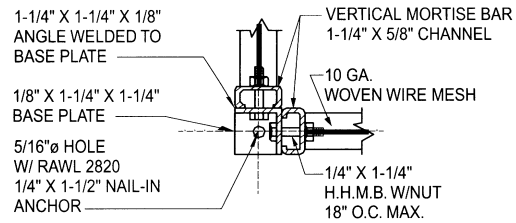
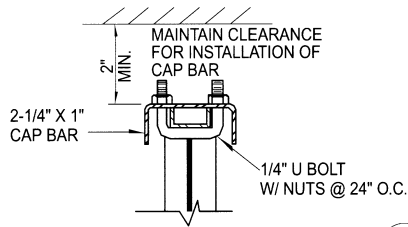
Stock Rooms	Data Centers
Tool Cribs	Colocation Facilities
Machine Rooms	Zoos
Armories	Stairwells
Post Offices	Banks
Prisons	Hospitals

Also Available:

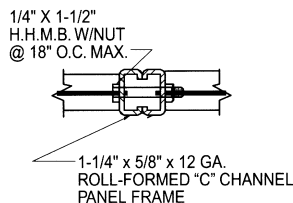
Handrail Infill Panels	Window Guards
Special Finishes	Custom Fabrications



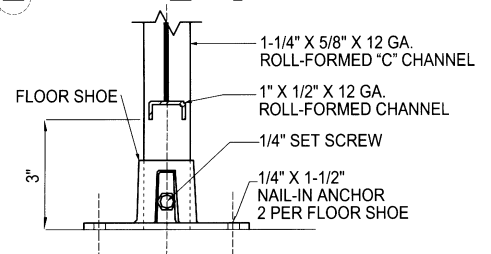
101 SPECIFICATIONS / CONSTRUCTION



A1 WALL CLIP CONNECTION



A4 PANEL-PANEL CONNECTION



A3 FLOOR CONNECTION

WIRE

No. 10 W&M gauge steel wire 1-1/2" diamond mesh clinched and welded to frames.

VERTICAL FRAMES

1-1/4" x 5/8" roll-formed 12-gauge "C" shaped channel specially formed to prevent telescoping.

HORIZONTAL FRAMES

1" x 1/2" roll-formed 12-gauge channel using mortise & tenon construction for extra strength.

CENTER STIFFENERS

(2) 1" x 1/2" roll-formed 12-gauge channels riveted and welded for greater strength and rigidity.

CAPPING BAR

2-1/4" x 1" roll-formed 12-gauge steel channel with 1/4" "U" bolts 24" O.C.

FLOOR SHOES

2" high die-cast aluminum with set screw adjustment.

CORNER POST

1-1/4" x 1-1/4" x 1/8" 90° angle.

SLIDING DOORS

Constructed of 1-1/2" x 3/4" x 12 gauge channel frame banded with 1/8" x 1-1/2" flat bar on (3) sides. The door is to have (2) four-wheel hangers with a box track.

HINGED DOORS

Constructed of 1-1/4" x 1/2" x 12 gauge channel frame banded with 1/8" x 1-1/4" flat bar on (3) sides. 1-1/2" pair butt hinges are welded to door sides and jamb.

SERVICE WINDOWS

Openings are 24" x 21" with a 12" shelf installed into standard panels and doors.

LOCKS

Doors are equipped with mortise type cylinder locks operated from outside with a key, and from inside with a recess knob. Padlock hasps and other options are also available.

FINISH

HVLP applied shop coat of Machinery Gray enamel. Standard options include Black, Blue, Tan, and Primer. Hot Dip Galvanized finish and special colors available upon request.

CALIFORNIA WIRE PRODUCTS CORP.

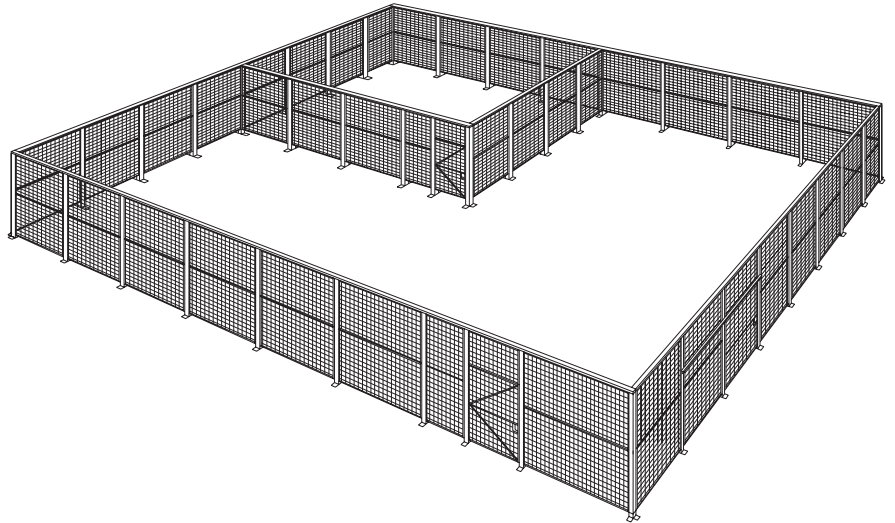
1128 West Bradford Circle · Corona, CA 92882
Ph. (800) 486-7730 • Fax (951) 735-1070
e-mail: info@cawire.com · http://www.cawire.com

Distributed By:



Cal Wire

Wire Mesh Products Since 1948



CAL WIRE Type 202 Construction Welded Wire Industrial Partitions

BENEFITS OF CAL WIRE WELDED WIRE MESH:

Security

Heavy duty 10 gauge welded wire with 2" openings, framed in 1-1/4" x 1-1/4" x 1/8" angle iron.

Flexibility

Stacked horizontal panels secured to steel tube support posts allow for quick and simple installation. Future layout changes are easy with Cal Wire's modular design.

Efficiency

Open wall design provides visual security, while utilizing existing lighting, sprinklers, and HVAC.



Applications For Standard 202:

Stock Rooms

Tool Crib

Machine Rooms

Armories

Post Offices

Prisons

Data Centers

Colocation Facilities

Zoos

Stairwells

Banks

Hospitals

Also Available:

Handrail Infill Panels

Special Finishes

Full Height Gates

Double Doors

Slide Up Service Windows

Window Guards

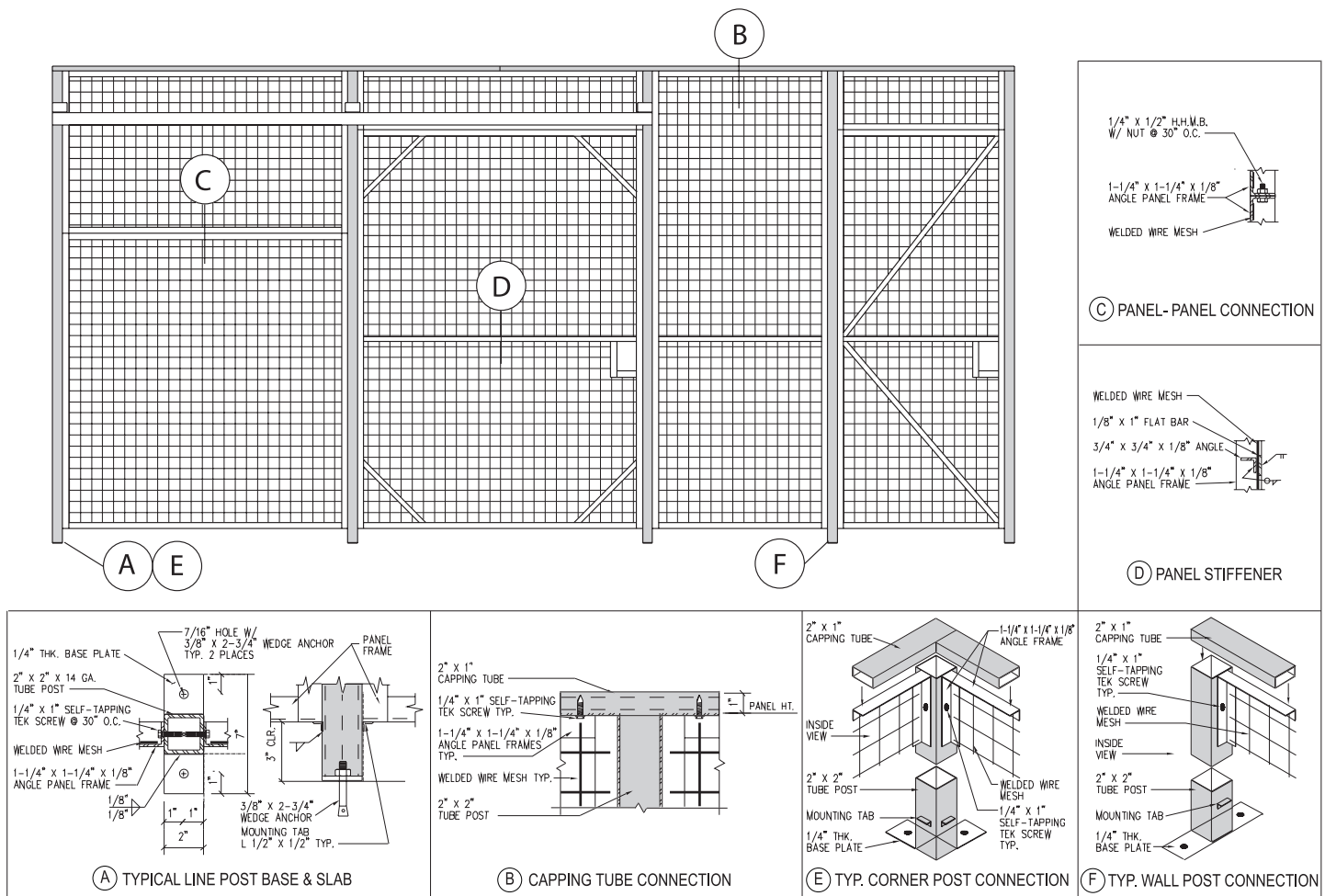
Custom Sizes

Ceiling Panels

Headerless Gates

Custom Colors

202 SPECIFICATIONS / CONSTRUCTION



WIRE

#10 W&M gauge steel wire welded into 2" square mesh, then welded to angle iron frames.

VERTICAL FRAMES

1-1/4" x 1-1/4" x 1/8" hot rolled angle iron provided with holes for fastening to adjacent panels or tube posts.

HORIZONTAL FRAMES

1-1/4" x 1-1/4" x 1/8" hot rolled angle iron provided with holes for fastening to adjacent panels or tube posts.

CENTER STIFFENERS

1/8" x 1" flat bar on front of panel with one 3/4" x 3/4" x 1/8" angle iron on back side of panel.

PARTITION CAP

2" x 1" x 1/8" steel tubing that secures panel to post connections for greater strength and rigidity.

POSTS

2" x 2" x 14 gauge steel tube support post with 2" x 7" x 1/4" base plate. Posts are available in standard heights of 7 ft. to 12 ft.

CALIFORNIA WIRE PRODUCTS CORP.

1128 West Bradford Circle · Corona, CA 92882
Ph. (800)486-7730 · Fax (951)735-1070
e-mail: info@cawire.com · <http://www.cawire.com>

SLIDING DOORS

All standard sliding gates range from 3 ft. to 10 ft. wide and 7 ft. to 12 ft. high. Mortise Type Lock is standard.

HINGED DOORS

All standard hinged doors are pre-hung and include two 2" x 2" x 14 gauge tube steel posts with a Mortise Type Lock. Available in 3 ft., 4 ft. and 5' widths with transoms. Also, 6' and 8' wide double swing gates.

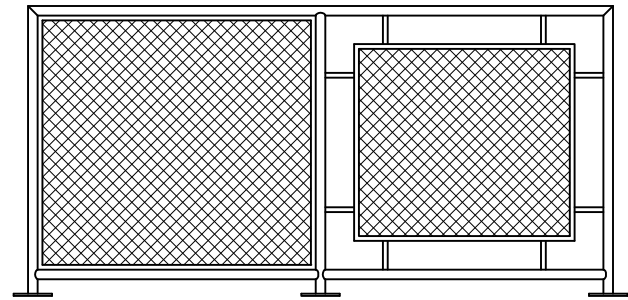
FINISH

HVLP applied shop coat of Machinery Gray enamel. Standard options include Black, Blue, Tan, and Primer. Custom colors and special finishes available upon request.

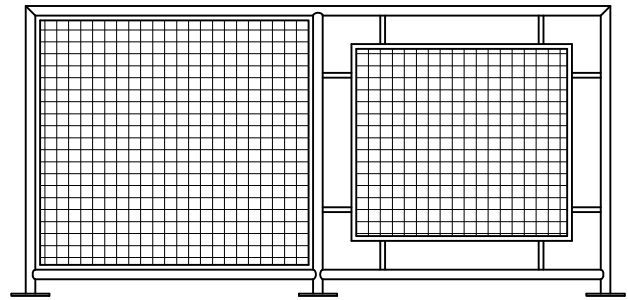
HARDWARE

All components are equipped with necessary assembly hardware.

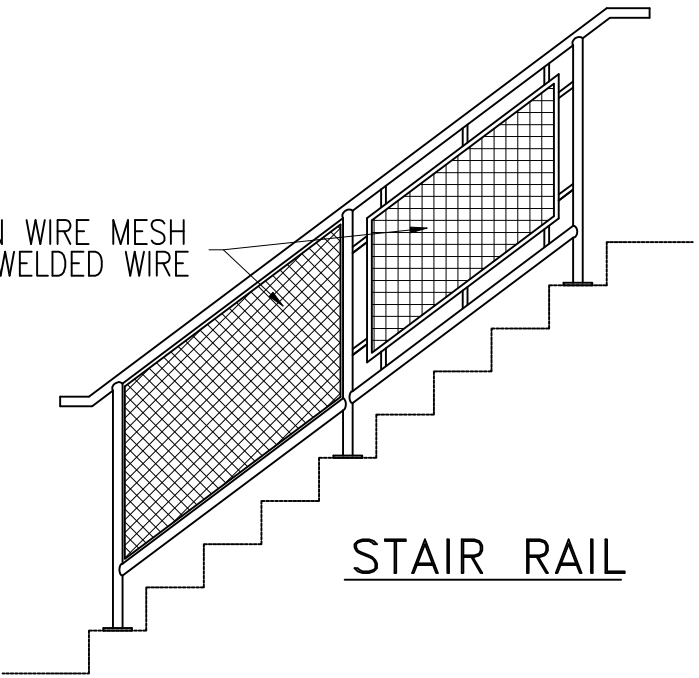
Distributed By:



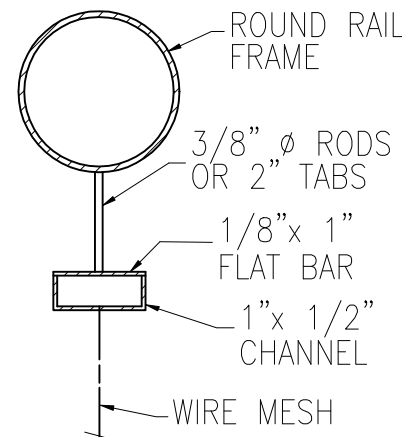
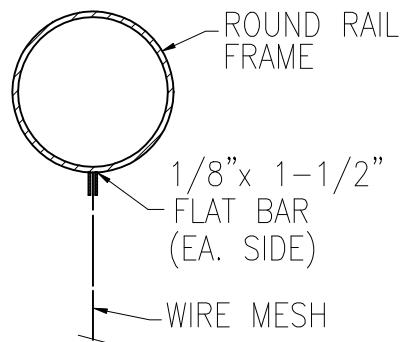
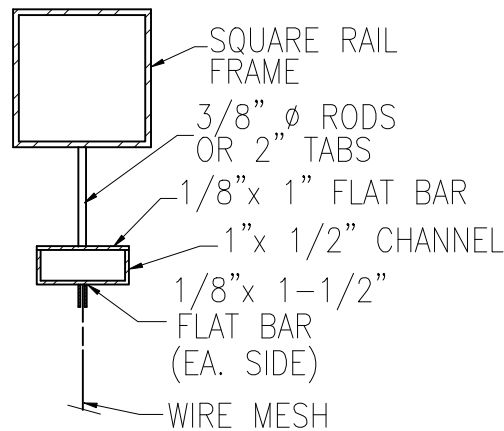
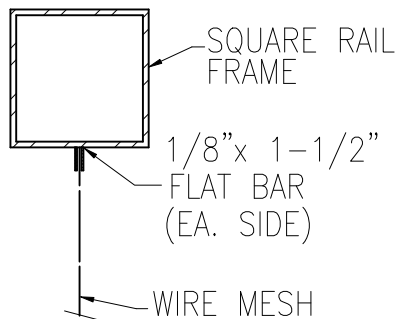
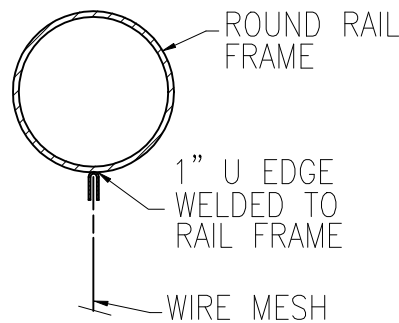
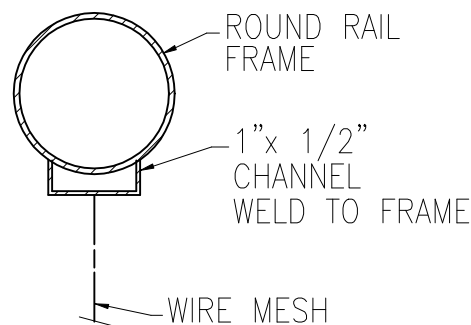
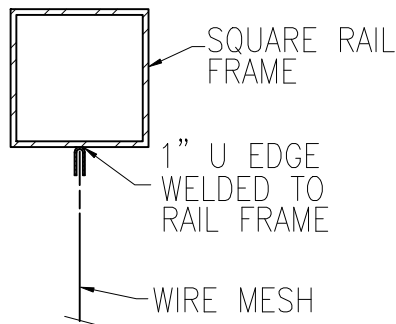
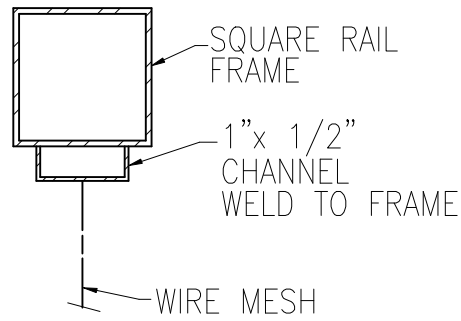
WOVEN OR WELDED WIRE



WOVEN OR WELDED WIRE



STAIR RAIL



MATERIAL SPECIFICATIONS

WIRE: 10 GAUGE, 6 GAUGE, & 4 GAUGE.

MESH: 3" SQ./DIA, 2" SQ./DIA, 1-1/2" SQ./DIA.

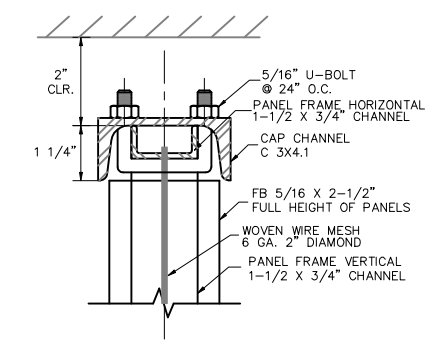
FRAMING: 2"x 1"x 1/8" CHANNEL
2"x 2"x 1/8" ANGLE
1-1/2"x 1-1/2"x 1/8" ANGLE
1-1/4"x 1-1/4"x 1/8" ANGLE
1-1/2"x 3/4"x 1/8" CHANNEL
1"x 1/2"x 1/8" CHANNEL
1" U EDGE

FINISH: PLAIN STEEL OR HOT DIPPED GALVANIZED

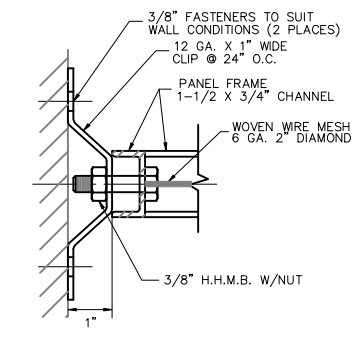
POSSIBLE ATTACHMENT DETAILS

CALIFORNIA WIRE PRODUCTS CORP.
1128 WEST BRADFORD CIRCLE
CORONA, CA. 91720
PHONE# (909)-371-7730 FAX# (909)-735-1070

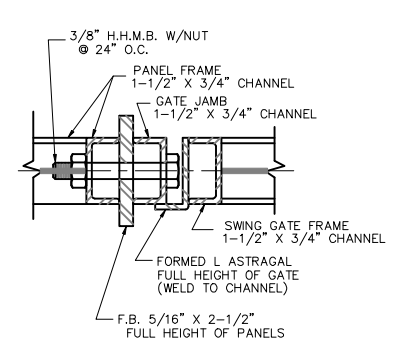
BLDG.	REF. DWGS.	PHASE OF	TITLE	PRODUCT	SERIES	DRAWN BY	REVISION	DATE
AREA		PART OF	HANDRAIL INSERTS WOVEN OR WELDED WIRE MESH	WIRE GAUGE	FRAME	DATE		
FLOOR				MESH SIZE		SCALE		
ROOM	CUSTOMER P.O.	DATE		PATTERN		NOT TO SCALE		
	APPROVED	DATE	CUSTOMER	FINISH	SPECIFY	FILE NAME	SHEET 1 OF 1	
			ARCHITECT			c:\cwp\handrail\hr_lsht	JOB NO.	



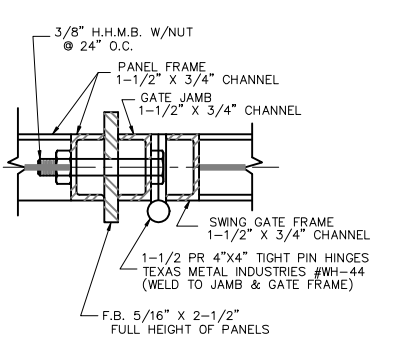
HA5 CAP BAR



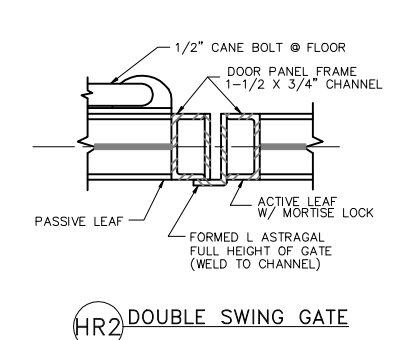
HB WALL CONNECTION



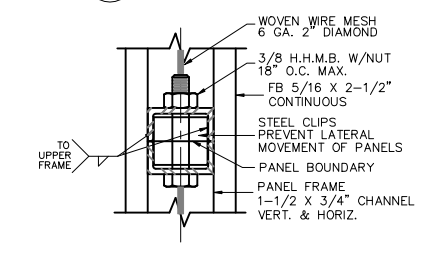
HR1 LOCK JAMB



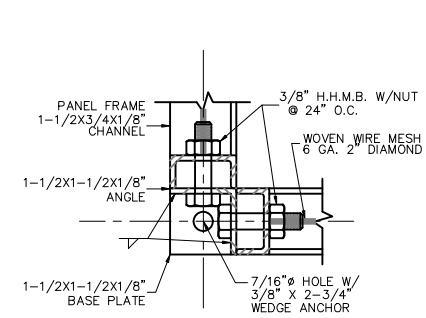
HR3 HINGE JAMB



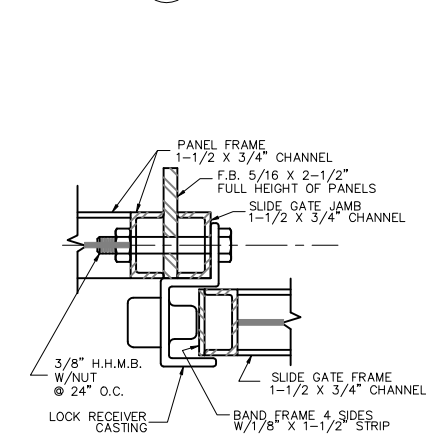
HR2 DOUBLE SWING GATE



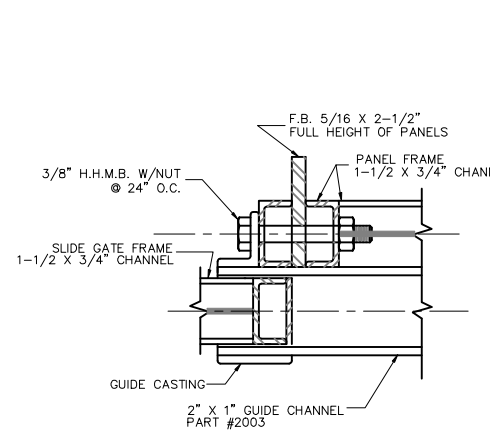
HA3 STACKED PANELS



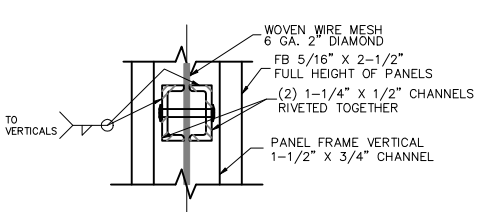
C 90° CORNER



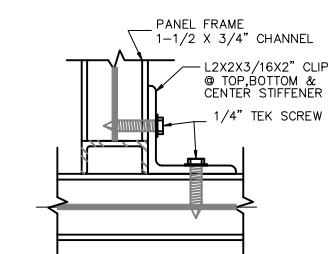
HE1 SLIDE GATE LOCK JAMB



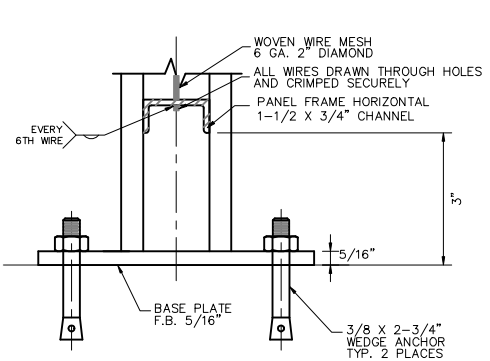
HE3 SLIDE GATE GUIDE JAMB



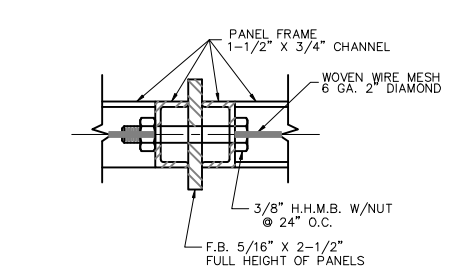
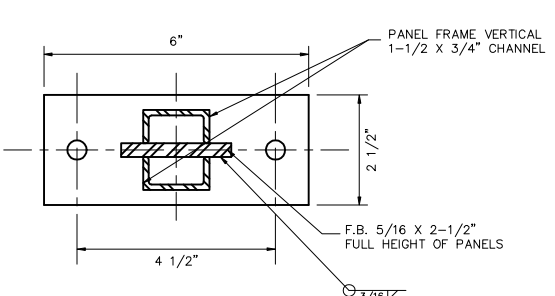
HA2 PANEL STIFFENER



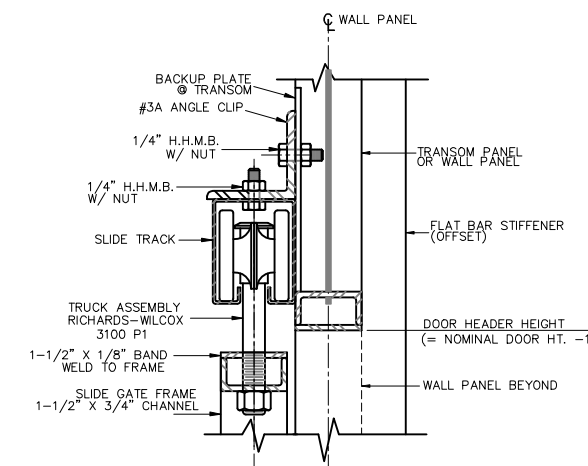
HW PANEL INTERSECTION



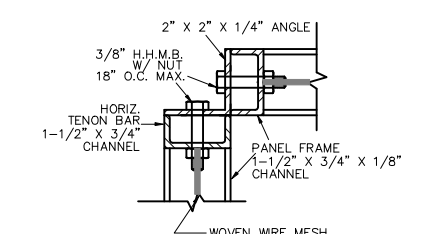
HA FLOOR CONNECTION



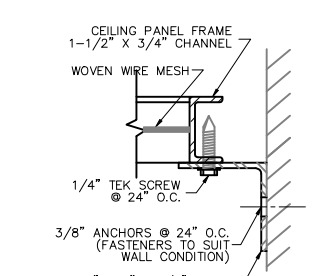
HF PANEL-PANEL CONNECTION



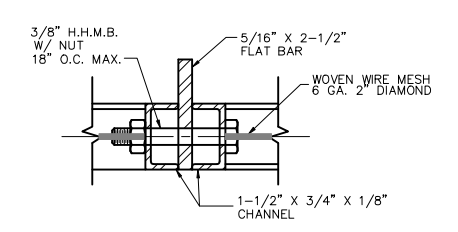
HE SLIDE GATE HEADER @ TRANSOM



HU1 CEILING ANGLE (HDCAP-10)



HU2 WALL CONNECTION (HDCAW-10)



HU6 CEILING PANEL CONNECTION

STANDARD 333 DETAILS

B.L.D.G.	REF. DWGS.	PHASE	OF	TITLE
AREA		PART	OF	
FLOOR		APPROVALS		
ROOM				CUSTOMER
				ARCHITECT

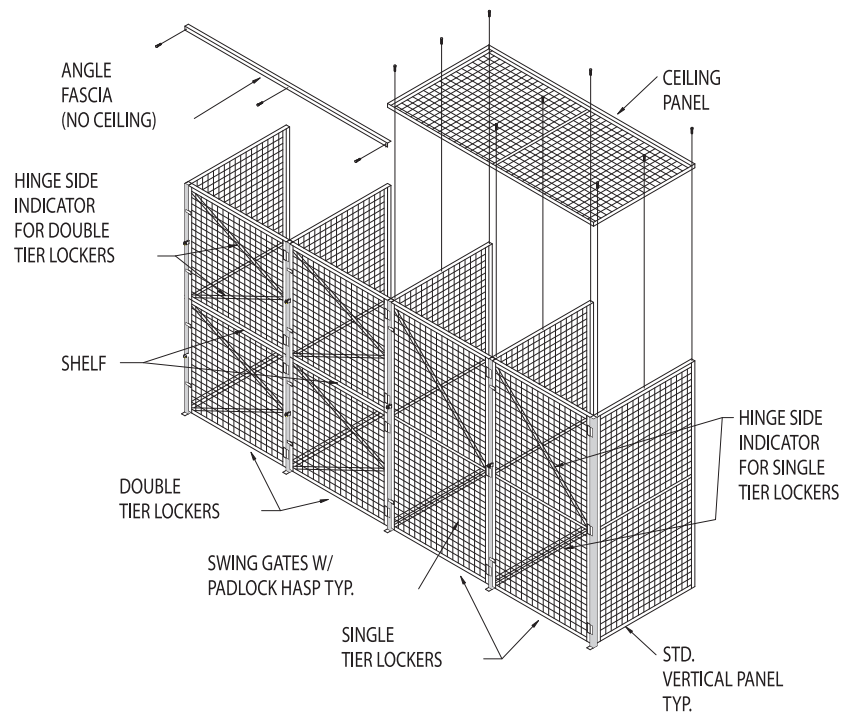
PRODUCT TYPE	WOVEN	SERIES	333
WIRE GAUGE	6	FRAME	1-1/2" X 3/4" X 1/8" CHANNEL
MESH SIZE	2" X 2"	FINISH	GRAY
PATTERN	DIAMOND		

CALIFORNIA WIRE PRODUCTS CORP. 1128 WEST BRADFORD CIRCLE CORONA, CA. 91720 PHONE# (909)-371-7730 FAX# (909)-735-1070			
DRAWN BY	DATE	ITEMS	
DATE	DATE		
SCALE	DATE		
FILE NAME	SH	DP	JOB NO.
C:\CWP\DET_333\333STAND	D1		



Cal Wire

Wire Mesh Products Since 1948



Cal Stor-N-Lock Welded Wire Storage Lockers

Benefits Of Cal Stor-N-Lock Storage Lockers

Security

Cal Stor-N-Lock storage lockers are the ideal solution to securing and organizing your valuable possessions. Wire mesh provides security, while permitting proper lighting and ventilation.

Simplicity

Cal Stor-N-Lock lockers can be erected easily with simple hand tools, along with our installation manual. Modular design makes future relocation or reconfiguration fast and efficient.

Applications:

Personnel Storage
Gym Equipment
Post Offices
Parking Garages
Colocation Areas

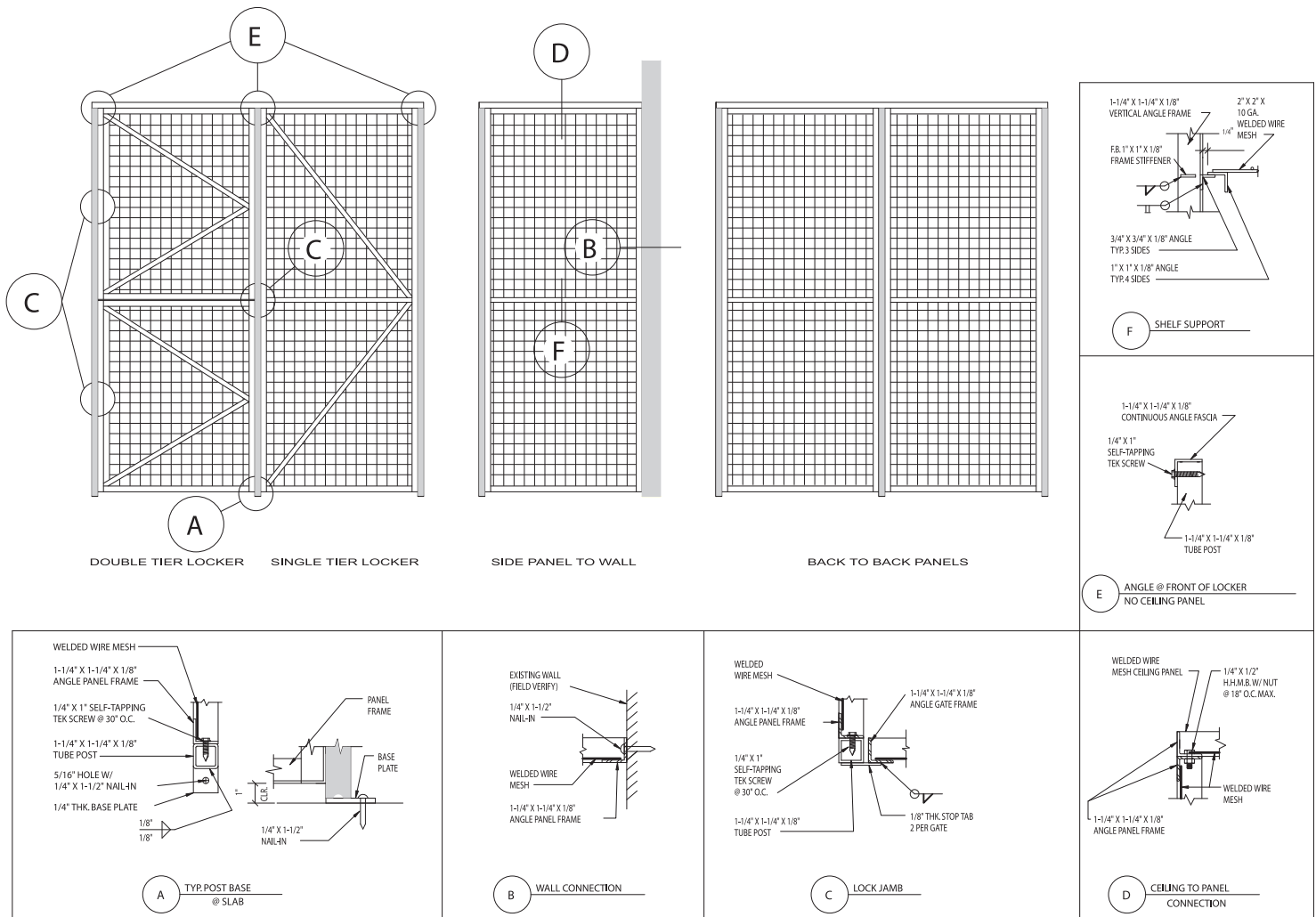
Military Bases
Retirement Communities
Apartment Facilities
Schools
Any Of Your Ideas!

Also Available:

Special Finishes
Ceiling Panels
Double Doors
Handrail Infill Panels

Custom Sizes
Headerless Gates
Custom Colors
Window Guards

SPECIFICATIONS / CONSTRUCTION



WIRE

#10 W&M gauge steel wire welded into 2" square mesh, then welded to 1-1/4" x 1-1/4" x 1/8" angle iron frame.

DOOR PANELS

Framed in 1-1/4" x 1-1/4" x 1/8" angle and pre-hung on tube steel frames. All single tier doors have a horizontal stiffener bar. All doors are supplied with padlock hasps and three hinges.

HARDWARE

Standard 1/4" grade 2 plated nuts, bolts, and tek screws are supplied for assembly. 1/4" anchors are supplied for concrete wall and floor attachment.

FINISH

HVLP applied shop coat of Machinery Gray enamel. Optional colors are available.

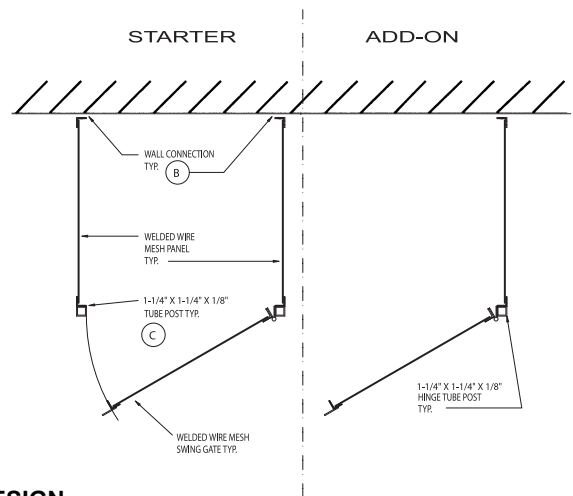
SINGLE OR DOUBLE TIER (DOUBLE TIER INCLUDES 1 SHELF)

Standard sizes from 3' to 5' wide and up to 7'-6" high. Depths are 3', 4', or 5'.

OPTIONS:

Ceiling - Lengths include 3', 6', 7', 8', 9' and 10'. Widths include 3', 4', and 5'. Back - Sizes include 3', 4', and 5' widths, 7'-6" height.

Tops, additional shelves and bottoms are also available. They are constructed of the same material as standard wall panels.



DESIGN

Cal Stor-N-Lock offers multiple configuration options. The Starter Lockers consist of 2 wall panels and 1 door panel. The Add-On Lockers include 1 door and 1 wall panel, to use in combination with a Starter Locker or in a building corner. Available in single and double tier designs with available options including ceilings, backs, and shelves.

CALIFORNIA WIRE PRODUCTS CORP.

1128 West Bradford Circle · Corona, CA 92882
 Ph. (800) 486-7730 · Fax (951) 735-1070
 e-mail: info@cawire.com · http://www.cawire.com

Distributed By:

COLOCATION CAGES



SECURE



VERSATILE



CUSTOM APPLICATIONS



TAMPER RESISTANT LOCKS

For more information:

Ph. (800) 486-7730 · Fax (909) 735-1070 · e-mail: info@cawire.com · <http://www.cawire.com>

Cal Monarch

Office Systems Division



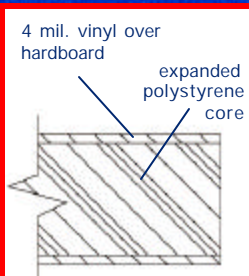
California Wire Products Corporation

Made in USA

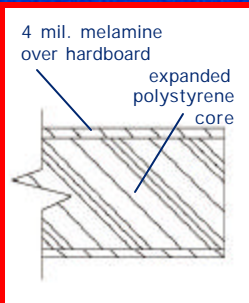


PANEL TYPES AVAILABLE IN 2" OR 3"

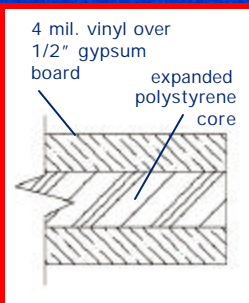
STD. INSULATED



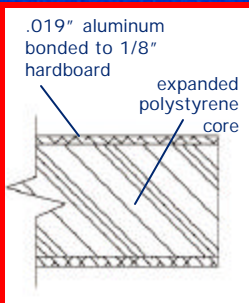
CLEANROOM



FIRE RETARDANT



EXTERIOR



STD. COLORS

ALMOND

MATTE GRAY

WHITE



STANDARD 2" IN-PLANT OFFICE

MAXIMIZE YOUR FLOOR SPACE

Cal Monarch Two-Story Office Systems allow for maximum use of available floor space.

Second story provides a clear view of the work area below.

Contact your local rep. for further information and a FREE quote!

GUARD SHACK
EXTERIOR OR INTERIOR



SAVE TIME AND MONEY

With Cal Monarch's project-specific Autocad drawings and easy-to-understand installation instructions your office can be installed in a speedy fashion.

The simple modular design allows you to make changes or relocate very easily.

Our in-plant offices offer outstanding value and convenience and are available in 2" or 3" thick wall systems.

Ask your rep. for a quote on both!

TWO-STORY OFFICE
WITH CAL GUARD RAIL



GUARD SHACKS FOR ADDED SECURITY

Portable guard shacks provide added security and access control.

They can be built to any size to meet your needs, fully assembled on a forkliftable base, or disassembled with easy-to-follow installation instructions.

COUNTLESS APPLICATIONS!

With Cal Monarch's quality and flexibility the applications are endless! These applications include: in-plant offices, guard shacks, reception offices, cleanrooms, conference rooms, lunch rooms, storage, first aid stations, computer rooms, quality control centers, personnel offices, equipment rooms, and display areas.



NEW 45° CORNER DESIGN !

CAL WIRE VALUE

When you place an order with Cal Wire, not only are you guaranteed the highest quality product, you are assured of receiving unsurpassed service and VALUE:

CONFERENCE ROOM



CUSTOM DESIGN - QUALITY YOU CAN COUNT ON!

Cal Monarch's in-house engineers can configure a custom system to meet your needs. Cal Monarch uses the finest USA-made materials to manufacture its office systems. With over 25 years experience you can be confident that you are getting the highest quality product. We can build your office to meet seismic and safety codes and offer a one year warranty.

OFFICESCAPE PARTITIONS

Cal Monarch Officescape Partitions are easily de-mountable so you can avoid the time, expense, and inconvenience of conventional drywall construction. Our Officescape partitions are durable, functional, and attractive. Ceiling height partitions are available for privacy and security.

OFFICESCAPE PARTITIONS



- * Free estimate
- * Free freight quote upon request
- * In-house Engineering and Customer Service Departments
- * Protective packaging
- * Forkliftable enclosed crate
- * All assembly hardware
- * Electrical outlets and switches
- * Instructions
- * Detailed project-specific CAD drawings
- * Installation Instructions
- * Quick lead times
- * One year warranty

Cal Guard Rail

Creating a safe work environment is one of the most sound investments a company can make. That is why the Cal Guard Rail System is essential to any warehouse or factory. It protects your most valuable assets - employees, customers, machinery, and the walls of your facility.

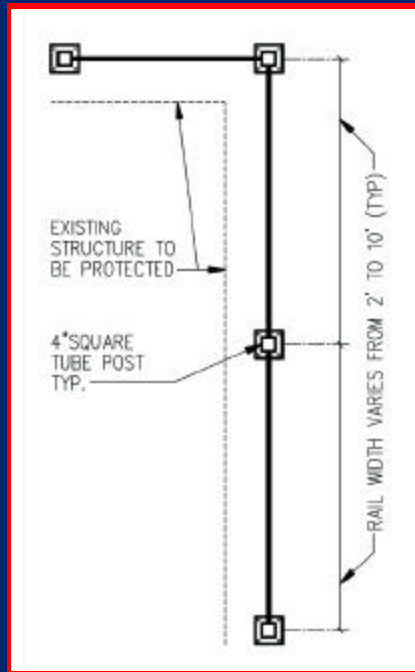
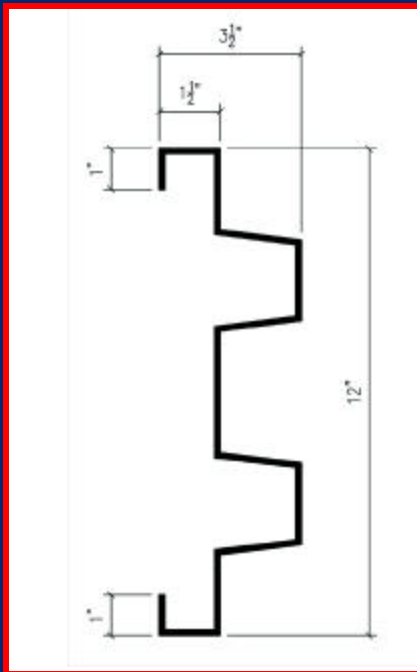


Rail Sections - shall be made from 12 gauge steel and shall meet ASTM requirements.

Mounting Posts - shall be 4" x 4" x 3/16" square structural steel tubing with 8" x 8" x 1/2" steel base plates.

Hardware - to include four 1/2" x 6" machine bolts, nuts, and washers.

Anchors - four 1/2" x 5" wedge anchors per post. Posts also include 4" x 4" decorative plastic insert caps.



MEETS CODE

Cal Guard Rail is available in a single (18" high) or double (44" high) rail system. The rolled returns at the top and bottom meet necessary safety requirements.

ECONOMICAL

Cal Guard Rail can be purchased and installed more economically than in-house, custom-fabricated barriers. They restrict possible costly injury or damage to personnel, equipment, and facility walls.

APPLICATIONS

Cal Guard systems can be used to protect aisleways, building walls, equipment, loading docks, electrical equipment, and inventory.

<u>Stock No.</u>	<u>Description</u>	<u>Wt. Lbs.</u>
GR 10	10' rail	80
GR 8	8' rail	64
GR 6	6' rail	48
GR 5	5' rail	40
GR 4	4' rail	32
GR 2	2' rail	16
SGRP	4" x 3/16" sq. tube x 18"	33
DGRP	4" x 3/16" sq. tube x 44"	53

CALIFORNIA WIRE PRODUCTS CORPORATION

1128 West Bradford Circle · Corona CA 92882
(909) 371-7730 · (800) 486-7730 · FAX (909) 735-1070
Website: www.cawire.com · E-mail: info@cawire.com

DISTRIBUTED BY: